



# Tactical Update 03:

## Washington D.C., 1-21-2021, 18:00 EST

Tactical Resolution Team

### EXECUTIVE SUMMARY

**BLUF:** No significant security events reported in D.C. for Inauguration and some protective measures being eased. A number of protests turned violent on West Coast overnight.

**This will be the last Tactical Update for the Inauguration.**

### CURRENT SITUATION

In D.C., the National Special Security Event for the Inauguration ended at noon today. Crews began taking down fencing and barriers on major streets and reopening some garages last evening at 18:00 EST. This process is estimated to take 36 hours to complete. Bridges over the Potomac River reopened this morning with some exit restrictions remaining. Metro stops in downtown to reopen Friday as are D.C. restaurants for indoor dining at 25 percent capacity.

Roughly 21,000 out-of-state National Guard troops began leaving the city today, however, the D.C. National Guard will maintain a presence in the city at least through January 30, especially around the U.S. Capitol. District officials advise that a “persistent threat” remains and over the next several days, weeks, and months, D.C. Metro Police, U.S. Park Police, Capitol Police, and the FBI will continue to work collaboratively to monitor indications of future protests in the city.

As of Wednesday night, three people had been arrested, two for unregistered ammunition and one for possession of a BB gun. In addition, D.C. MPD, Capitol Police, and U.S. Supreme Court Police responded to three bomb threats Wednesday morning that were all cleared with no threat found.

Metro services have normalized, and traffic restrictions are being lifted in downtown D.C. Most bridges and tunnels are open to traffic, most of Constitution Avenue is accessible, and Massachusetts Avenue is open in front of Union Station. Access to the National Mall is still restricted, including Independence and Maine avenues near the Tidal Basin. The Mall will likely not open until January 22 at the earliest.

Demonstrations mostly over immigration rights and police reform turned violent in the Pacific Northwest after President Joe Biden's inauguration. In Seattle, WA, dozens of demonstrators shattered windows and damaged government buildings and businesses in the commercial core during a scheduled protest against the Immigration and Customs Enforcement (ICE) agency. Damage occurred at the federal courthouse and at several businesses, including an Amazon Go and the original Starbucks store in the Pike Place Market Historic District. Protestors clashed with police on several occasions, and 12 people were arrested.

In Portland, OR, some members of a group of about 150 far-left demonstrators smashed windows and vandalized the Democratic Party of Oregon headquarters in the Kerns neighborhood on the afternoon of January 20. Police arrested eight people on charges of felony criminal mischief, rioting, and possession of a destructive device. After 20:00 PST, a separate group of Antifa and BLM activists gathered at the ICE building in the South Waterfront neighborhood, some carrying pepper ball guns, electronic defense devices, and fireworks. The crowd chanted anti-government and anti-Biden slogans before federal police declared an unlawful assembly and utilized crowd control munitions, including tear gas, to push the crowd away from the building. Officers from the Portland Police Bureau deployed in the area, but no physical confrontations occurred.

## ASSESSMENT

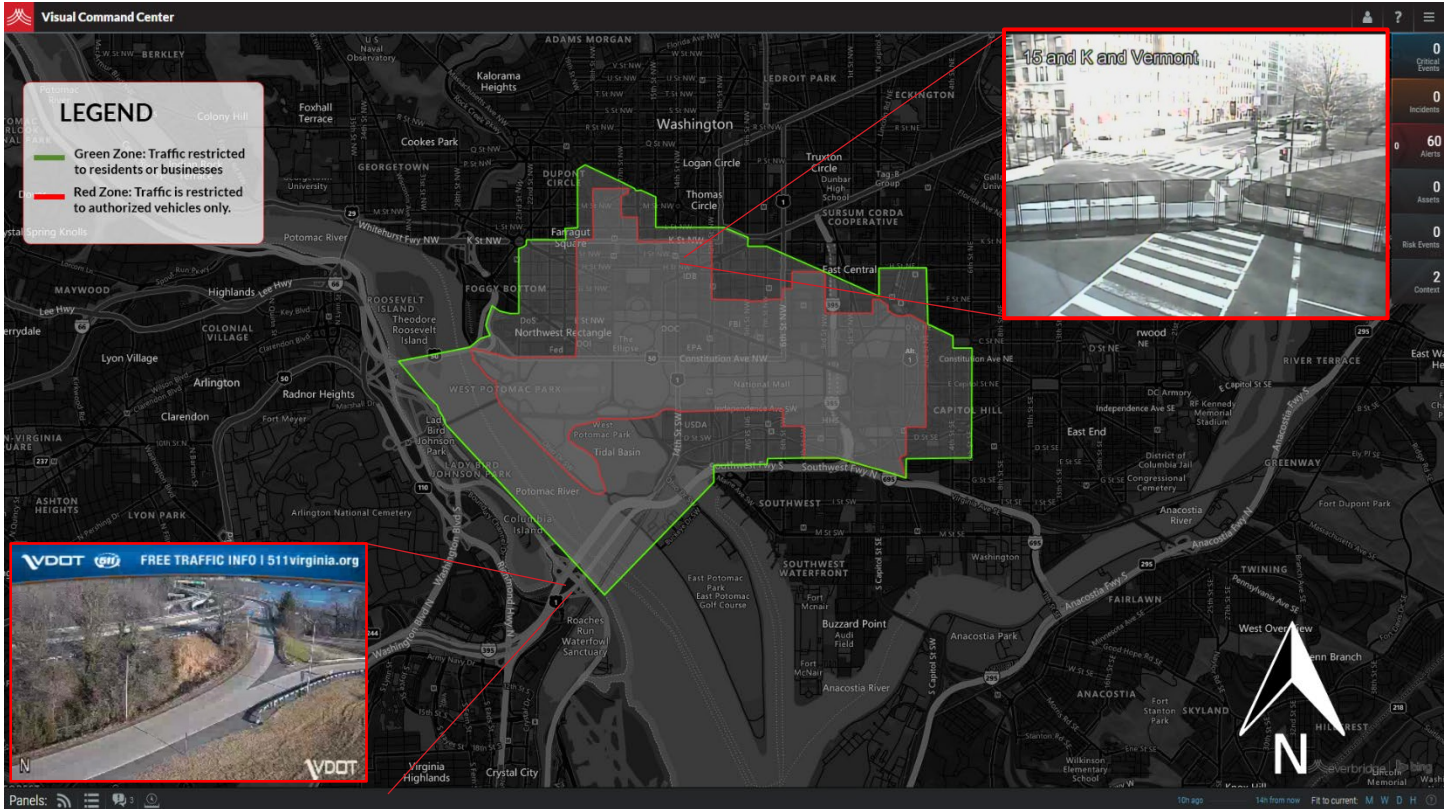
The National Security Event designation for D.C. was removed today at 12:00 EST. Vehicular access in the downtown core and National Mall will slowly be restored, but disruptions are possible through January 24. Some enhanced security measures will likely remain in place in Washington, D.C., but most parts of the area included in the inaugural security zone should be accessible to the public by January 24 at the latest barring any unexpected security problems.

While the concern for violence has decreased, the security posture will remain elevated in D.C., and mutual aid law enforcement and military resources will be present for at least the near future, with National Guard soldiers and airmen expected to remain deployed in the capital through the end of January.

Disruptive protests involving far-left groups are expected to continue indefinitely in cities such as Seattle and Portland. Antifa and other far-left organizations oppose all governmental authority and are unaffiliated with the Democratic Party, as demonstrated by the vandalism and property damage in Portland. However, far-left activism will likely remain elevated in an effort to pressure the new administration to concede to longstanding political and social justice demands. Continued lawlessness by these groups could eventually lead to confrontations with supporters of right-wing organizations, although a significant change in prevailing security conditions is not anticipated in the immediate future.

## VISUAL COMMAND CENTER

D.C. area map showing Inauguration security footprint and traffic impacts. Red Zone: Traffic is restricted to authorized vehicles only. Green Zone: Traffic restricted to residents or businesses. The traffic camera on the lower left shows that the opening of bridges has reduced traffic choke points. The second camera is showing the remaining barriers in the area of the White House which are expected to be reduced over the next few days.



### About this Document

The team compiling this document understands that it is the right of every American to peaceably assemble. The team is not monitoring the social media accounts or footprints of any individuals or groups but is searching for signals and indicators of disruptions that could affect client operations.

### About “Tactical Resolution”

The Everbridge Tactical Resolution Service is a prototype program designed to give Everbridge clients an even richer and deeper understanding of operational conditions before, during, and after select critical events. The team will supplement Everbridge’s current Risk Intelligence by delivering enhanced operational details about a threat or disruption with deep levels of fidelity and resolution. This team will track a disruptive situation and provide frequent updates until there is resolution and recovery from the incident. For more information contact your customer success manager or account team.